



**capability** statement



[WWW.JAS-ANZ.ORG/REGISTER](http://WWW.JAS-ANZ.ORG/REGISTER)



[www.cutulielectrical.com.au](http://www.cutulielectrical.com.au)



**CONSTRUCTION | INDUSTRIAL | INFRASTRUCTURE**



# Table of Contents

<b>Company Overview</b>	<b>3</b>
Company Information	3
Vision, Mission Values	4
<b>Relationships</b>	<b>5</b>
<b>Management Systems</b>	<b>6</b>
Workplace Health and Safety Management	6
Quality Assurance	7
Environment Management	7
<b>Value Engineering</b>	<b>8</b>
<b>Project Management and Risk</b>	<b>8</b>
<b>Capabilities</b>	<b>9</b>
<b>Projects</b>	<b>10</b>
Communications	10
HVAC	11
Electrical	12
Thermographic Scanning	13
Design Services	13
Energy Management Services	14
<b>Technology</b>	<b>15</b>
<b>Contact</b>	<b>16</b>



## Company Overview

### Consistent, reliable and reputable

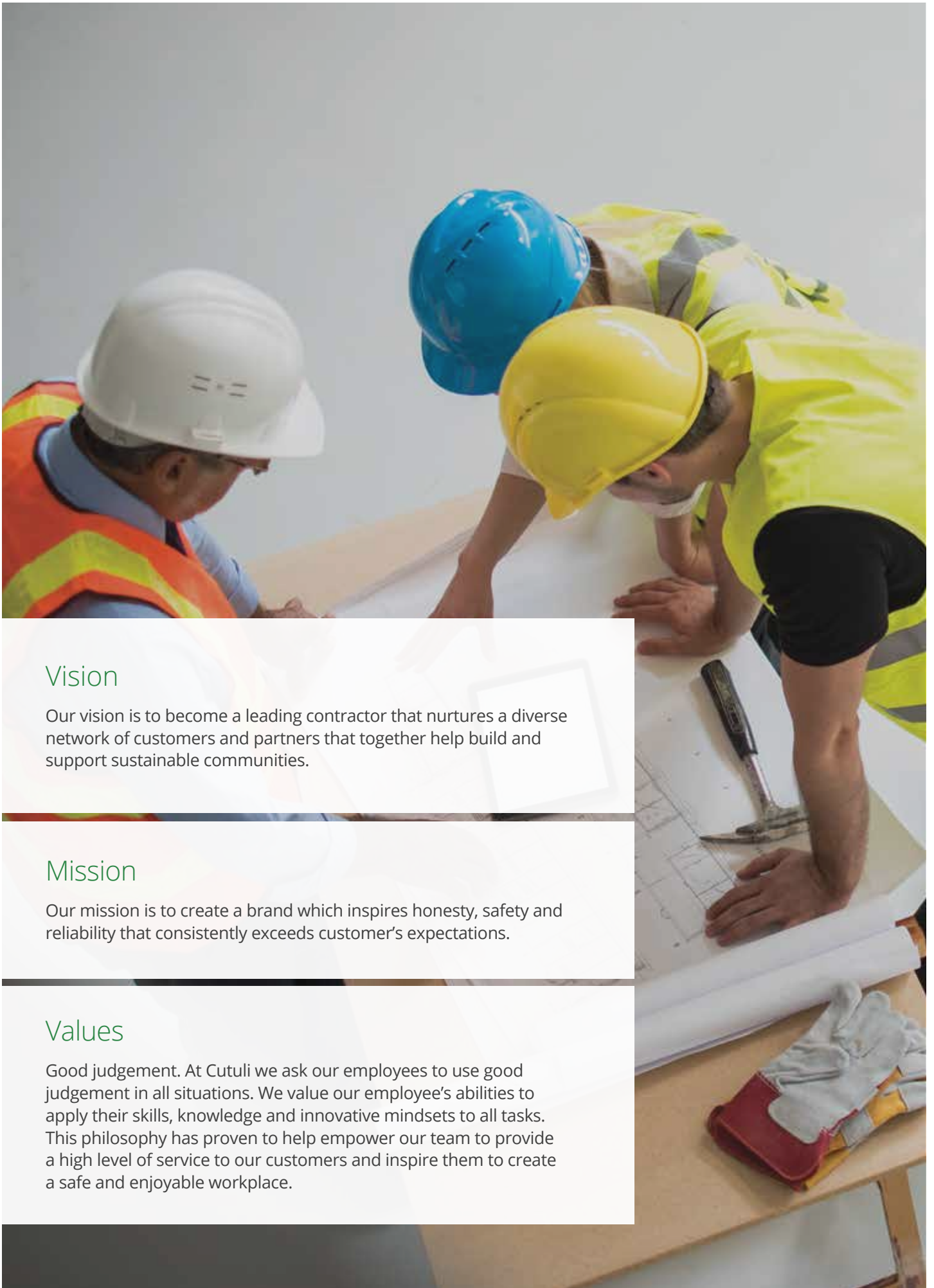
---

At Cutuli Electrical, we practice an integrated approach that combines our technical and managerial expertise.

**We have a problem-solving culture, clear values and strong leadership. Whether our client's projects are complex, technical and operational challenges, or located in remote locations – Cutuli Electrical is full of passionate professional people who are committed to finding and delivering solutions. At Cutuli Electrical we bring together people with reliable and efficient processes and systems.**

We have an established network of in-house engineering, project management and delivery resources with a strong track record of planning and executing projects in difficult and challenging environments. Our progressive attitude means we continuously seek to surpass our strong reputation for service quality and delivery.

We understand the highly competitive market in which we operate and continue to drive initiatives aimed at not only reducing our cost base but driving process improvements and efficiencies to ensure we deliver value for money to our clients.



## Vision

Our vision is to become a leading contractor that nurtures a diverse network of customers and partners that together help build and support sustainable communities.

## Mission

Our mission is to create a brand which inspires honesty, safety and reliability that consistently exceeds customer's expectations.

## Values

Good judgement. At Cutuli we ask our employees to use good judgement in all situations. We value our employee's abilities to apply their skills, knowledge and innovative mindsets to all tasks. This philosophy has proven to help empower our team to provide a high level of service to our customers and inspire them to create a safe and enjoyable workplace.

# Relationships

## **Client Relationships**

At the heart of our business are clients who invest in us because they know we deliver. Our reputation has enabled us to build a broad and diverse client base with many long-term repeat clients.

## **Staff**

We aim to be a great employer and bring the best trained people with the right attitude to every job. We are committed to investing in our people and providing them with the best equipment, systems, infrastructure and technology. We seek to continuously learn from our experience and remain abreast of industry and technology innovations, so that we can offer our client's the right solution to their need.

## **Working With Others – Partners and Suppliers**

Our longevity in the industry has enabled us to develop trusted and respected relationships with many of Australia's leading engineering consultants, professional bodies and businesses. We remain up to date with which subcontractors and suppliers are maintaining our high standards and ensure our commercial arrangements are clear and effectively managed.



# Management Systems



## Workplace Health and Safety Management

*Cutuli Electrical is registered as a safety endorsed company with Compliance Australia to AS/NZS 4801:2001 and OHSAS 18001:2007 standards*

**Cutuli strives to provide a safe work environment for the health, safety and welfare of our employees, subcontractors, visitors and member of the public who may be affected by our work.**



All employees and sub-contractors are fully engaged in the system and are aware of their responsibilities; this is implemented through many channels. Employees and contractors are provided with adequate facilities and are supported to pursue HSE objectives.

All risks are assessed before work starts on new areas of operation, work methods are set up and risks are regularly reviewed.



Cutuli are committed to continually developing, operating and improving the Occupational Health and Safety Management System.

The system integrates with the Quality and Environmental management systems and aims to exceed Australian Standards and contractual needs.

### Safe work environment

Cutuli develop and maintain safe systems of work, providing control over a safe working environment.







## Quality Assurance

*Cutuli Electrical is registered as a quality endorsed company with Compliance Australia to ISO 9001:2015*

Our Quality Management System enables us to provide our clients with a high degree of confidence in our ability to deliver the best services to the highest standards. Developed and refined over many years, our system encompasses our activities and adapts to our clients' needs.

A specific quality plan is developed for each of our projects and covers all aspects of administration and management, work methods, document control, inspections and test and compliance check sheets.

Our Quality Systems and the system instructions are subject to continual review and all users are able to electronically submit change proposals to the system manager who distributes such requests to other users for review/comment/approval prior to any subsequent implementation.

Delivering quality projects is the up most importance for the Cutuli team.



## Environment Management

*Cutuli Electrical is registered as an environmental endorsed company with Compliance Australia to ISO 14001:2015*

Cutuli is committed to the continual improvement of its environmental performance, recognising its obligations both locally and to the wider community, to the present and succeeding generations.

Cutuli Electrical manage the activities over which it has control and which impact upon the environment in accordance with the principles of ecological sustainability.

Our team are provided with training and they actively comply and promote environmental awareness and initiatives. They strive to conserve resources, reduce waste and minimize the environmental impacts of our operations.

All operations are undertaken in an environmentally responsible manner and in accordance with relevant environmental legislation.

## Value Engineering

Working with our customers, technology partners and utilising the best available resources allows us to provide our customers with the best outcomes and opportunities for innovative solutions and exceptional results.

Advantageously, Cutuli seeks to become involved in projects as early as possible throughout the design and construct phases.

The sooner Cutuli is involved, the greater the ability to influence design outcomes. This enables us to reduce projects costs and reduce delivery time through value engineering.

A photograph of a worker in a white hard hat and yellow high-visibility vest working on an electrical panel. The worker is using a red screwdriver to adjust a component on the panel. The background is slightly blurred, showing more of the electrical equipment.

## Project Management and Risk

---

**Our technical capabilities are supported by comprehensive project and program management that provides our clients with a high level of assurance and reduced uncertainty.**

In every project and task we undertake, we carefully consider management and operational risk to best deliver projects safely, cost effectively and on time.

# Capabilities

Cutuli has the experience and resources to work with clients at every stage of a project and pride ourselves on having a collaborative approach that consistently delivers.

Our range of services can be applied to an asset's entire life cycle, or we can focus on smaller, highly technical components. We are an adaptive company that can tailor our services to meet the most demanding clients' needs.

We support our clients' through the life of their assets - from initial feasibility to design and construction through to production and operations and eventual decommissioning. Our services also extend to upgrades, modifications, and bringing new technology to existing assets and commercial properties to enhance functionality and performance.

Cutuli is recognised as a company that delivers on installation and maintenance of electrical and communications systems as well as providing design solutions. Providing services to a broad customer base is our strength, however the following sectors are Cutuli's primary focus:

- Industrial
- Commercial infrastructure
- Urban infrastructure
- Mining



## Client Services/Maintenance

Cutuli aims to support our clients wherever possible through our professional services, covering the Industrial, Commercial and Mining sectors.

### Our services include:

- Industrial / mine site maintenance
- Building maintenance
- Vessel maintenance
- Thermal imaging
- Instrumentation maintenance
- PLC, automation & control, motors & machinery servicing
- Hazardous area audits
- Power factor correction
- Preventative maintenance plans
- Switchboard labelling, circuit tracing & identification certification & compliance
- RCD testing
- Test and tag appliances
- Split, ducted and packaged air-conditioning system maintenance and servicing
- Chillier, cold-rooms, freezer rooms maintenance and servicing
- Ventilation system maintenance and servicing
- 24 hour emergency call-out



## Projects

Cutuli provides our clients with integrated, multi-disciplined services covering electrical, AC & refrigeration, data and security and instrumentation. We can execute an extensive range of small to medium scale projects.

---

### Communications

Cutuli offers our customers a diverse range of cabling installations.

#### Services provided include:

- Design and construct services
- LV, MV and HV installations
- Switchboard and metering alterations
- Standby generators
- Uninterruptible power supply (UPS)
- Light & power
- Exit and emergency lighting
- Lighting control systems
- Energy management systems
- Lightning protection
- Maintenance & servicing

#### Our diverse range in service & projects include:

- Commercial and industrial facilities
- Mining facilities
- Port facilities
- Small and large greenfield commercial building projects
- Electrical refurbishments and upgrades
- Commercial solar projects
- Building refurbishments and fit-outs
- Government building projects



## HVAC

Cutuli can offer installation and maintenance schedules for projects of all sizes. We offer a team of highly skilled refrigeration tradesmen that are able to adapt and provide the most effective and cost-efficient solution for our clients.

### Cutuli's services include:

- Ducted air conditioning systems
- Packaged type air conditioning systems
- Split system air conditioners
- Chiller type air conditioning plant
- Air compressor dryers
- Cold-rooms, cool-rooms and freezer rooms
- Custom and propriety refrigerated cabinets
- Ventilation systems
- Design
- Air balance
- Water treatment
- Sheetmetal fabrication and install
- Duct installation
- Controls
- Heat exchangers



## Electrical

Cutuli deliver on a vast range of electrical services to numerous market sectors.



### Services provided include:

- Design and construct services
- LV, MV and HV installations
- Switchboard and metering alterations
- Standby generators
- Uninterruptible power supply (UPS)
- Light & power
- Exit and emergency lighting
- Lighting control systems
- Energy management systems
- Lightning protection
- Maintenance & servicing
- Automatic synchronising systems
- Electrical reticulation systems
- HV and MV substations and switchboards
- Generator and backup systems
- Motorized control systems
- Process control systems
- PLC systems
- SCADA systems
- High frequency systems
- Integrated control and instrumentation
- Fuel storage and transfer systems
- HV networks both public and private
- Padmount, kiosk & chamber substation installations
- HV switchboard and RMU installations
- Transformer installation & maintenance
- Installation of poles & aerial conductors
- Street & area lighting
- HV cable jointing
- Excavation & cable laying
- Liason, connection & commissioning to authority networks

## Thermographic Scanning

Thermographic Scanner is a high quality infra-red scanner. This camera scans your apparatus and provides detailed information on the temperature of various parts of the equipment. Potential problems appear as unusually high operating temperatures thus causing stress to the equipment. Whilst the equipment may not have broken down yet, it will only be a matter of time. Finding the potential problem areas allows you to plan for maintenance of the equipment at a time to suit your production schedule or your tenants.

Cutuli Electrical provides a comprehensive report on the Scanning performed on your premises. The report includes a colour thermographic image, a colour photo to enable clear indication of the area scanned and colour graphic information describing the results of the scan. Accompanying the report are recommendations for action, which we are pleased to discuss with you and arrange the required preventative maintenance.

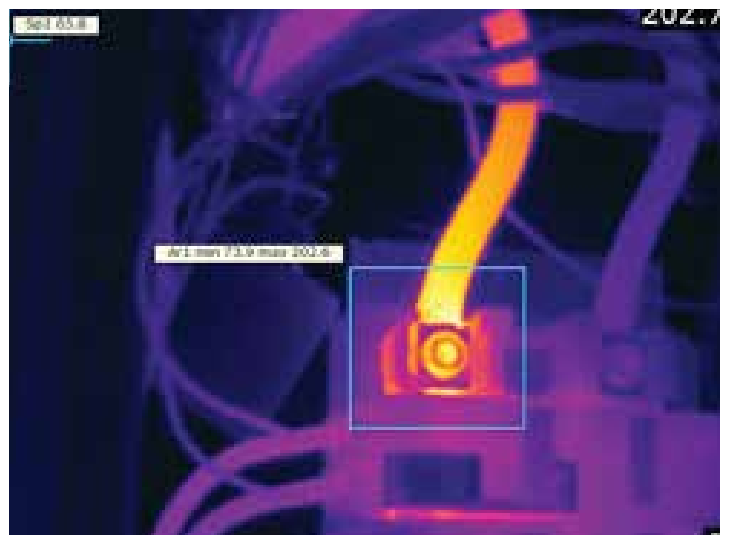
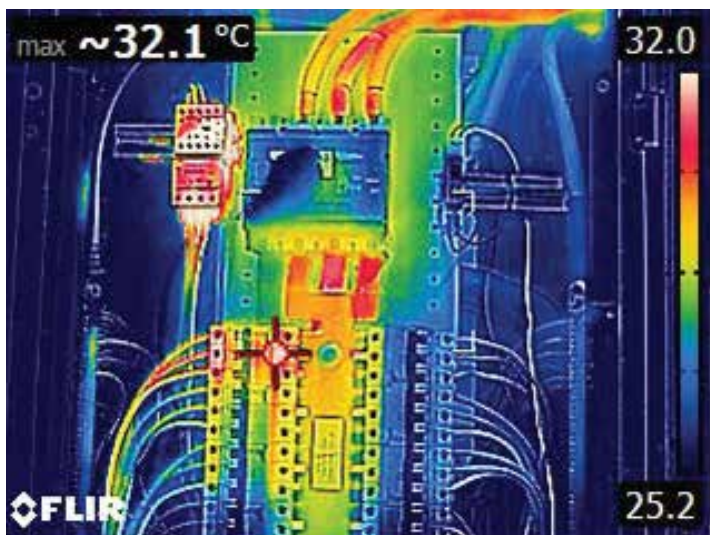
New plant and equipment can benefit from Thermographic Scanning as it will provide confirmation of correct installation and act as a reference for ongoing maintenance and scanning reports.

## Design Services

Providing the designs services to our client's means.

Services provided include:

- Electrical and communications systems for commercial buildings
- Level 3 Design of Utility Networks
- Industrial process installations
- Mining and industrial infrastructure
- Telecommunications infrastructure
- Residential, Commercial & Rural subdivisions
- HV chamber, padmount & kiosk substations
- Public and private street lighting
- Energy and power monitoring systems
- Solar power systems
- Gas & diesel standby power systems



## Energy Management Services

---

We are committed to the environment and helping our customers operate sustainably. In response to rising power prices and global warming we offer many energy saving, eco-friendly solutions that also save our clients' money.

## Power Quality

- UPS system maintenance and installation
  - Power quality analysis
  - Power factor correction
  - Energy auditing of electrical installations
  - Surge protection
  - Harmonic filtering
  - Lightning protection systems
  - Standby generators
  - HV & LV circuit breaker servicing, repairs & intrinsic testing
  - HV transformer oil testing and maintenance
- 

## Energy Management

- Energy audits
- Power analysis and data logging
- Electricity tariff selection
- On-going energy monitoring
- Energy management systems
- Lighting control systems
- Line carriers
- Energy saving timers and movement sensors
- Lighting efficiency analysis and upgrades
- Solar power (grid and off-grid connected systems)





# Technology

## **Optimal efficiency**

---

Cutuli uses a variety of software systems that integrate seamlessly and enable us to operate at optimal efficiency. This high level of productivity allows Cutuli to focus more on the tasks at hand and achieve a high level of results for our clients.

## **SimPRO**

Our enterprise software 'simPRO' enables efficient management of our client's job from quotation to completion.

The mobile application 'Connect' enables Cutuli staff in the field to update times, materials and details used for each job with the data being streamed live to the Cutuli office.

## **SimTRAC**

All Cutuli vehicles are equipped with the latest tracking devices so we are aware of our technician's whereabouts at all times. The tracking devices are also fitted with a speed-monitoring feature, this helps keep our staff and others safe on the roads.



#### Gladstone Office

☎ (07) 4978 3494

✉ [admin@cutulielectrical.com.au](mailto:admin@cutulielectrical.com.au)

📍 9 Hilliard Street, Gladstone, QLD 4680

#### Yeppoon Office

☎ (07) 4978 3494

✉ [admin@cutulielectrical.com.au](mailto:admin@cutulielectrical.com.au)

📍 22 Cathne Street, Cooee Bay, QLD 4703

#### Brisbane Office

☎ (07) 3180 2680

✉ [admin@cutulielectrical.com.au](mailto:admin@cutulielectrical.com.au)

📍 433 Logan Road, Stones Corner, QLD 4120

#### Licence Details

**ABN:** 23 154 902 217

**QBCC:** 15047156

**Electrical Contractor:** 74371



[www.cutulielectrical.com.au](http://www.cutulielectrical.com.au)